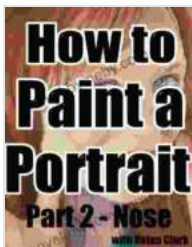


Mastering Noses in Portraiture: A Comprehensive Guide for Artists

The nose, a prominent facial feature, plays a crucial role in defining the character and expression of a portrait. Capturing its complexities and nuances requires a keen understanding of anatomy, lighting, and color theory. In this comprehensive guide, we embark on a journey to explore the art of painting noses in portraiture, equipping you with the knowledge and techniques necessary to render this feature with precision and artistry.



How to paint a portrait Part 2: Noses by Ruth Superhal

★★★★☆ 4.8 out of 5

Language : English

File size : 11426 KB

Text-to-Speech : Enabled

Screen Reader : Supported

Enhanced typesetting : Enabled

Print length : 75 pages

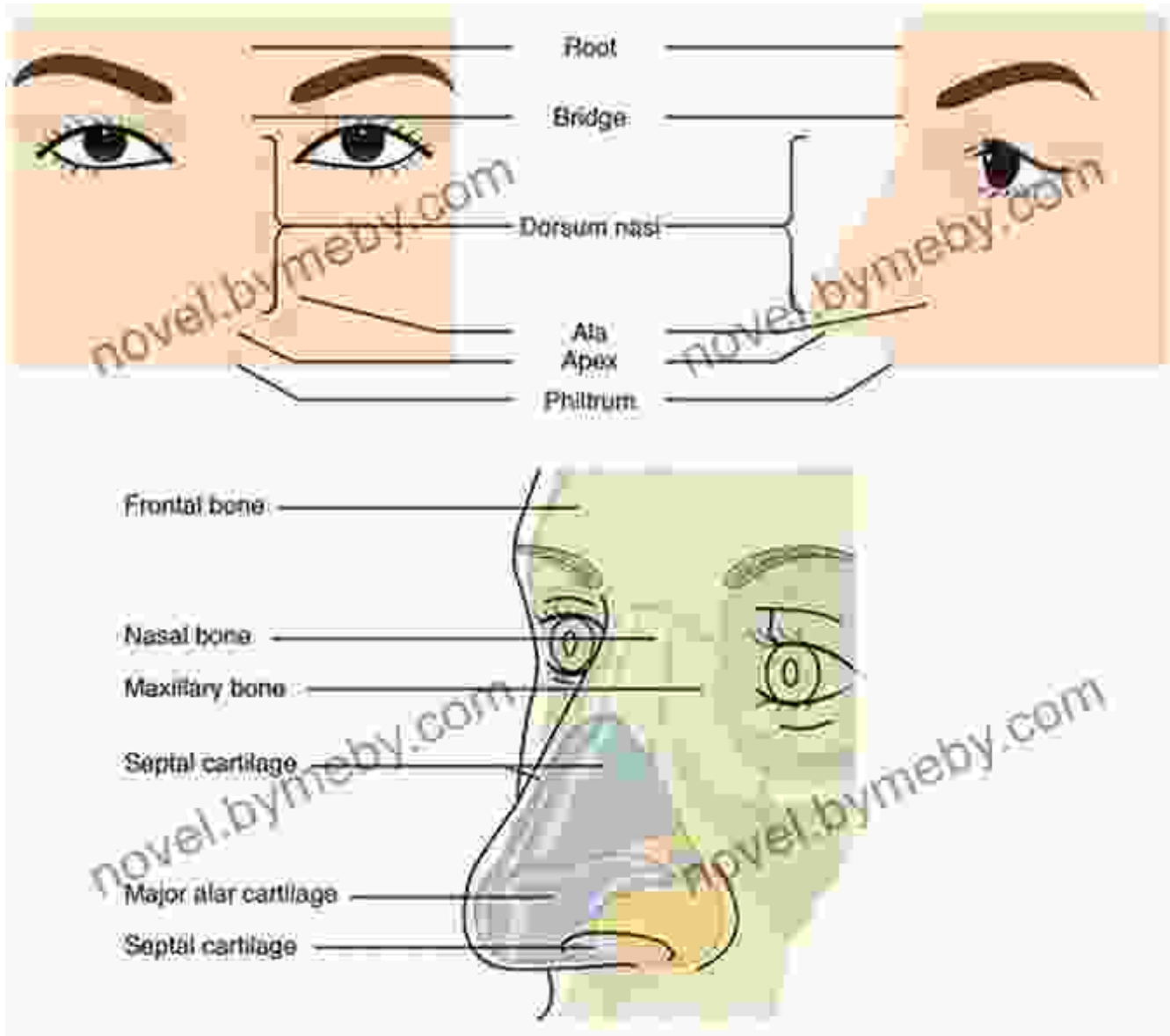
Lending : Enabled



Anatomical Overview

To paint a realistic nose, it's essential to grasp its underlying structure. The nose consists of bone and cartilage, with the nasal bones forming the bridge and upper portion. The cartilaginous lower part includes the septum, which divides the nasal cavity, and the alae nasi, or side walls, that flare when we breathe.

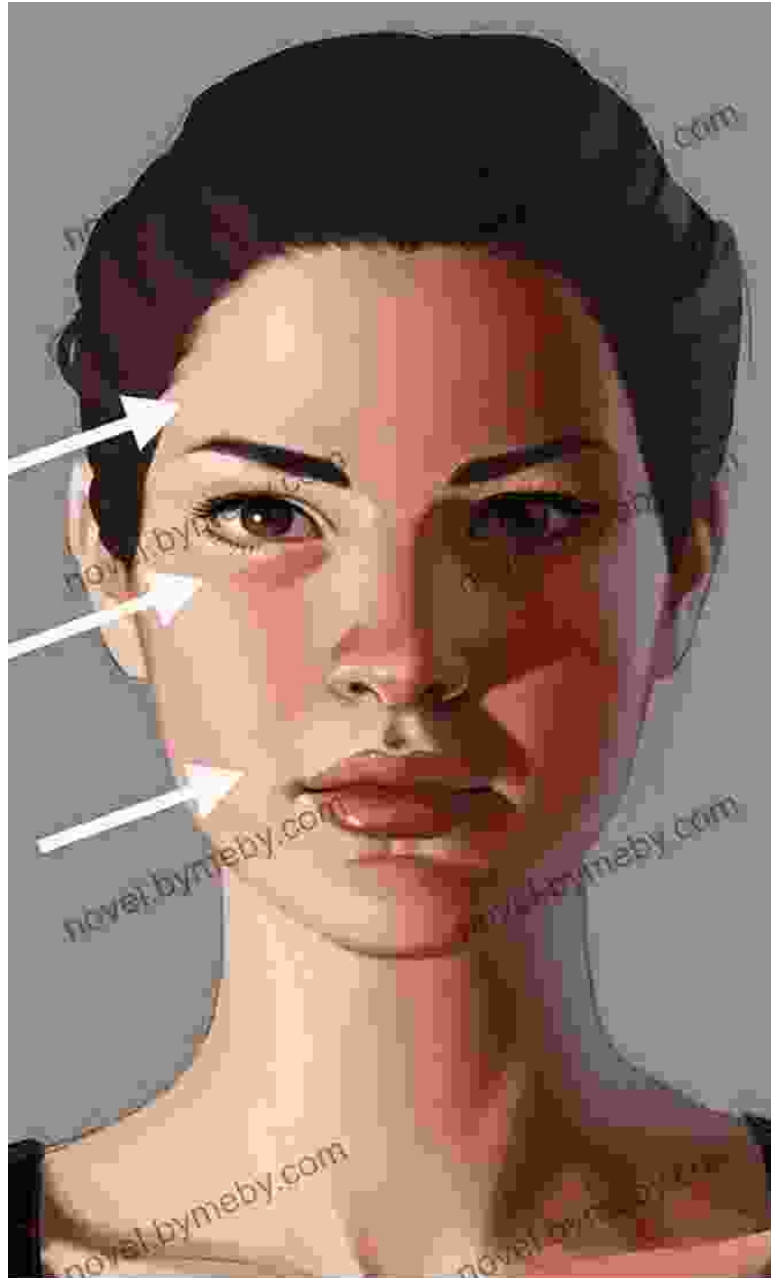
Understanding the interplay of these elements and their contours is crucial for rendering the nose's shape and depth accurately.



Lighting and Shadows

Lighting plays a vital role in shaping the appearance of the nose. Observe how light falls on the nose and creates highlights, midtones, and shadows. Pay attention to the subtle transitions between these areas, which define the form and volume.

The bridge of the nose is typically the lightest part, while the sides of the nose and the nostrils recede into shadow. The angle of the light source determines the direction and intensity of these shadows.



Example of how lighting influences the perception of the nose's shape

Color and Tone

The color of the nose varies depending on the individual's skin tone. Warm tones, such as pinks and reds, are often present in areas closest to the light source. As we move away from the light, cooler tones, such as blues and greens, appear in the shadows.

Observing the subtle variations in color and tone is essential for capturing the unique characteristics of each nose. Avoid using pure colors; instead, mix and blend complementary colors to create nuanced and realistic tones.



Techniques and Brushes

Various brush techniques and types can be employed to paint noses effectively. Start by blocking in the basic shape with a medium-sized brush. Use a round brush for precision when defining details and contours.

Experiment with dry brushing to create subtle textures on the skin surface. Stippling is another useful technique to build up color and create the illusion of depth. For blending, a soft brush with a large surface area works well.



Selection of brushes commonly used in nose painting

Step-by-Step Tutorial

To illustrate the process, let's walk through a step-by-step tutorial on how to paint a nose:

1. **Sketch the outline:** Begin by lightly sketching the outline of the nose, capturing its overall shape and proportions.
2. **Block in the basic colors:** Using a medium-sized brush, block in the main color areas of the nose. Keep the colors simple at this stage.
3. **Define the structure:** Use a round brush to define the contours and shadows of the nose. Pay attention to the transitions between light and dark areas.
4. **Add details:** Add finer details, such as skin texture, pores, and highlights. Use dry brushing or stippling techniques for subtle effects.

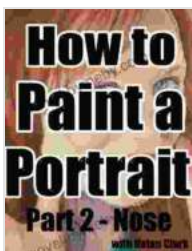
5. **Blend and refine:** Use a soft brush to blend and refine the colors and tones, creating a smooth and harmonious transition between areas.

Tips and Tricks

- Practice drawing noses from different angles and perspectives.
- Study the work of master portrait painters to observe their techniques.
- Use reference photos or live models to capture the unique features of each nose.
- Don't be afraid to experiment with colors and tones.
- Pay attention to the overall proportion and balance of the nose in relation to the rest of the face.

Mastering the art of nose painting in portraiture requires patience, practice, and a keen eye for observation. By understanding the anatomical structure, lighting, color theory, and techniques, you can develop the skills to capture the character, expression, and unique beauty of the human nose.

Remember, every nose is a masterpiece waiting to be revealed on canvas. Embrace the challenge, and let your brushstrokes bring these portraits to life.



How to paint a portrait Part 2: Noses by Ruth Superhal

★★★★☆ 4.8 out of 5

Language : English

File size : 11426 KB

Text-to-Speech : Enabled

Screen Reader : Supported

Enhanced typesetting : Enabled

Print length : 75 pages

Lending : Enabled

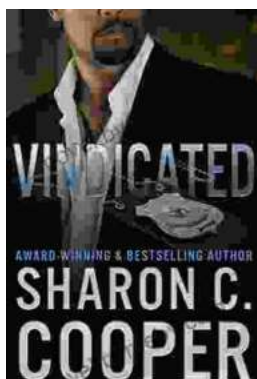
FREE

DOWNLOAD E-BOOK



Arthur Meighen: A Life in Politics

Arthur Meighen was one of Canada's most important and controversial prime ministers. He served twice, from 1920 to 1921 and from 1926 to 1927. During his time in office, he...



Vindicated: Atlanta's Finest

In the heart of Atlanta, a city known for its vibrant culture and bustling streets, a shadow of darkness lurked. A series of brutal murders had gripped the...